



# **REQUEST FOR PROPOSALS (RFP) QUESTIONS AND ANSWERS #3**

for

## **Digital Communications System Microwave Equipment & Services**

for

### **Kitsap 911 Kitsap County, Washington**

Kitsap 911  
Contracts Manager  
911 Carver Street  
Bremerton, WA 98312-4300  
[contracts.manager@kitsap911.org](mailto:contracts.manager@kitsap911.org)

Released  
December 17, 2021

Prepared by:  
**Mark B. Nelson**  
**Technology Advisor**  
360-979-9075 Voice / Text  
e-mail: [mnelson@kitsap911.org](mailto:mnelson@kitsap911.org)

### QUESTIONS AND ANSWERS #3

Since releasing the second tranche of Questions and Answers on December 10, 2021, Kitsap 911 received the following questions concerning the November 15, 2021 Request for Proposal for Digital Communications System Microwave Equipment & Services.

Questions are presented as provided to Kitsap 911.

Numbering starts with 301 to denote this is the third tranche of questions and answers.

An **ANSWER** is provided for each question.

301. I had asked several questions regarding the water tank and the tower attached on the tank. Do you have any drawings or information? NWTE had nothing on their list. If you have any pictures on the interior of the Lincoln Hill Tank, where the equipment is, it would be helpful.

**ANSWER** – Kitsap 911 not have any documents concerning the water tank and tower at the Lincoln Hill site. Several photographs are below.



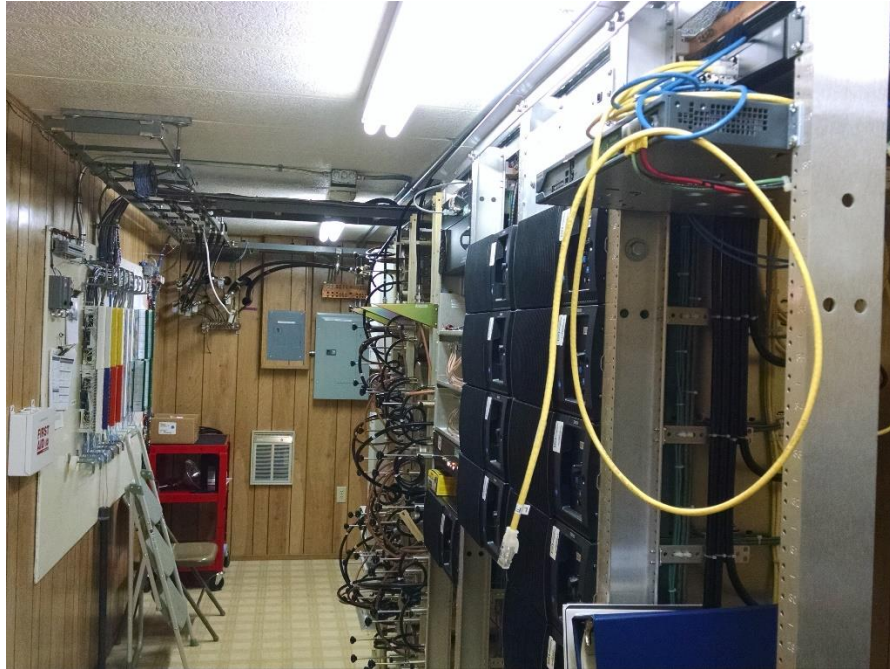
**Lincoln Hill – Electronic Equipment Enclosure Base of Water Tank**



**Lincoln Hill – DC Power Plant Batteries**



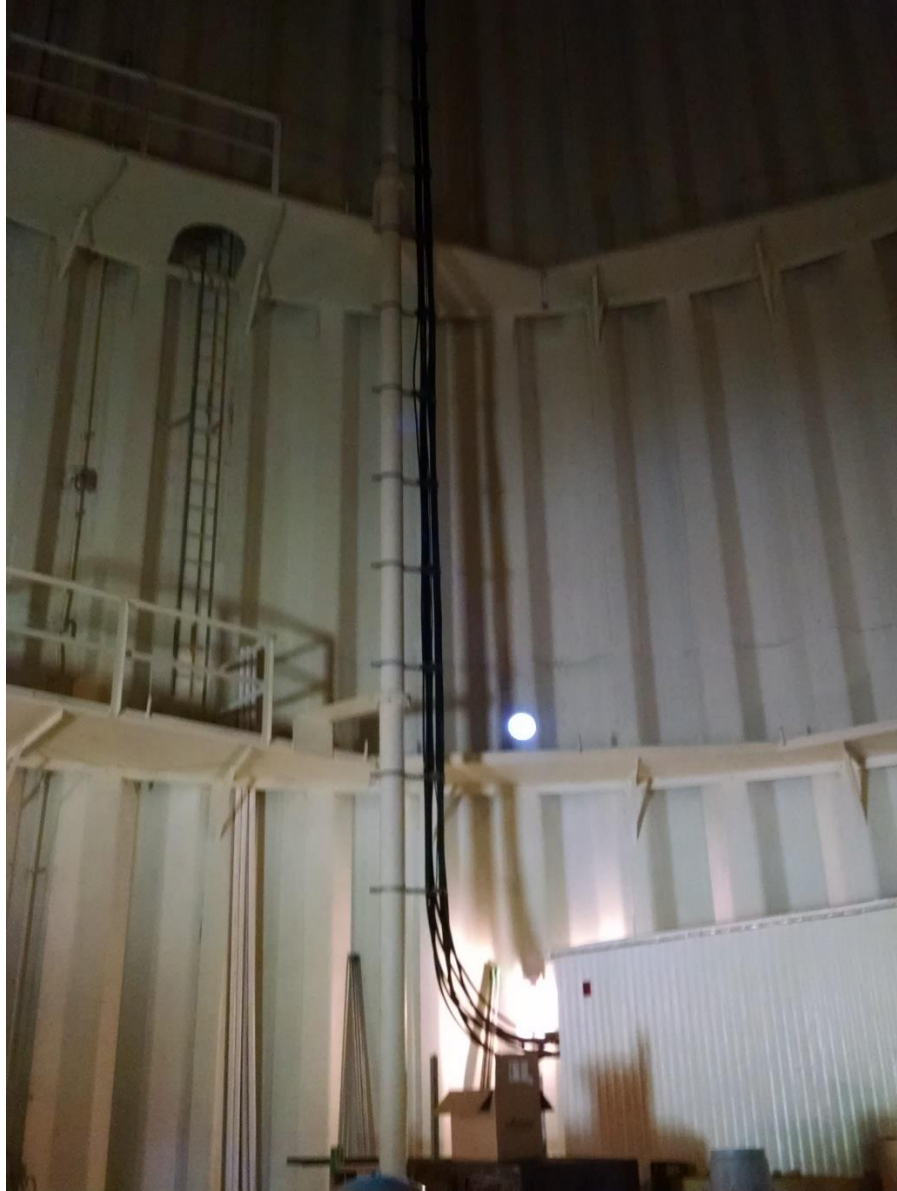
**Lincoln Hill – DC Power Plant**



**Lincoln Hill – Electronic Equipment**



**Lincoln Hill – Microwave Radio Equipment Rack & Combiners**



**Lincoln Hill – Waveguide Ladder Inside Water Tank**



**Lincoln Hill – Looking Up Toward Bottom of Water Tank Waveguide Ladder Rack**

302. At Gold Mountain, what are the dimensions of the rectangular waveguide entrance ports that serve the microwave tower?

**ANSWER** – The openings are 3¼" wide x 2¼" high. The blank cover plates are 5" wide x 4" high.