

Finish orders and product installation instructions are provided with these documents. Approval of the Client shall be required for all changes, scope of work and all dimensions regarding the Client's furniture and equipment. Furniture orders, or product installation authorized by the Client from these documents, shall be the responsibility of the Client. Revisions after approval of these documents shall result in additional costs.

Signature:

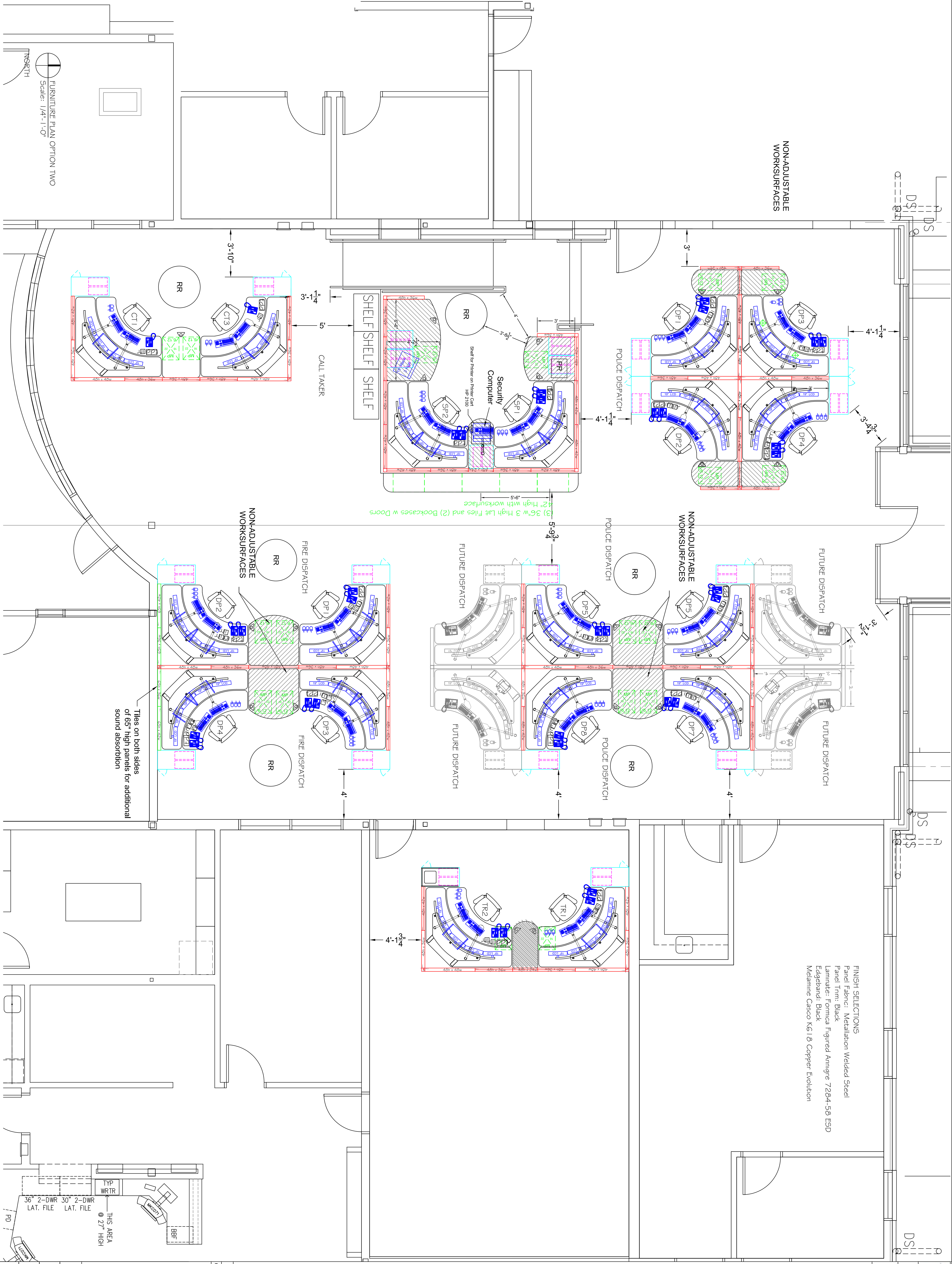
Title:

Date:

Legend	
	Tasklight
	42\"/>
	48\"/>
	65\"/>
	Mobile Pcd
	6.1.2\"/>
	Sliding Shelf
	CPU cabinet
	Personal Environment

CENCOM/DEM Facility Bremerton, Washington

FINISH SELECTIONS
 Panel Fabric: Metalation Welded Steel
 Panel Trim: Black
 Laminate: Formica Figured Amigre 7284-56 ESD
 Edgeband: Black
 Melamine Casco K6 I8 Copper Evolution



REVISIONS		
REV	DESCRIPTION	DATE
0	Bid Documents	3.8.04 JH
1	Client Approval	5.12.04 JH
4	Changed Signatur Platform to Square corner	6-2-04 JHC
5	Removed 2 Call Stations	6-2-04 JHC
6	Removed CPU Added Universal Receivers	6-2-04 JHC

DATE	3.8.04 JH
DESIGNED BY	JH
CHECKED BY	JH
DATE	5.12.04 JH
DESIGNED BY	JH
CHECKED BY	JH
DATE	6-2-04 JHC
DESIGNED BY	JH
CHECKED BY	JH
DATE	6-2-04 JHC
DESIGNED BY	JH
CHECKED BY	JH

DATE	3.8.04 JH
DESIGNED BY	JH
CHECKED BY	JH
DATE	5.12.04 JH
DESIGNED BY	JH
CHECKED BY	JH
DATE	6-2-04 JHC
DESIGNED BY	JH
CHECKED BY	JH
DATE	6-2-04 JHC
DESIGNED BY	JH
CHECKED BY	JH

FURNITURE PLAN OPTION TWO
 Scale: 1/4" = 1'-0"
 NORTH